

The technical drawing consists of two parts. The left part, labeled 'ARMADÃO', shows a circular cross-section of a structure with a grid of blue reinforcement bars. Dimensions are indicated: a vertical dimension of 1000 mm and a horizontal dimension of 1000 mm. A note specifies 'PDS 1.1 x 8 10mm c/20'. The right part, labeled 'FORMA', shows a circular cross-section of the formwork, which is a simple circle with a horizontal diameter line.

QUADRO DE FERRO				
Ø(mm)	POS.	QUANT.	COMPRIMENTOS	
			UNIT.(cm)	TOTAL(m)
10	1	14	148	20,72

RESUMO			AÇO CASO
Ø(mm)	COMP. (m)	PESO +10%	
10	20,72	13,67Kg	

Technical drawing of a circular concrete slab reinforcement. The drawing shows a top view of a circular slab with a central square opening. The outer diameter is 2052-4 mm at 7/10. The inner square opening has a side length of 1025-2 mm at 10mm x 7/10. The slab thickness is 102 mm. The reinforcement is labeled 'ARMACÃO' and 'QUADRO DE FERRO'. The drawing is titled 'FORMA'.

QUADRO DE FERRO				
Ø(mm)	POS.	QUANT.	COMPRIMENTOS	
			UNIT.(cm)	TOTAL(m)
10	1	12	98	11,76

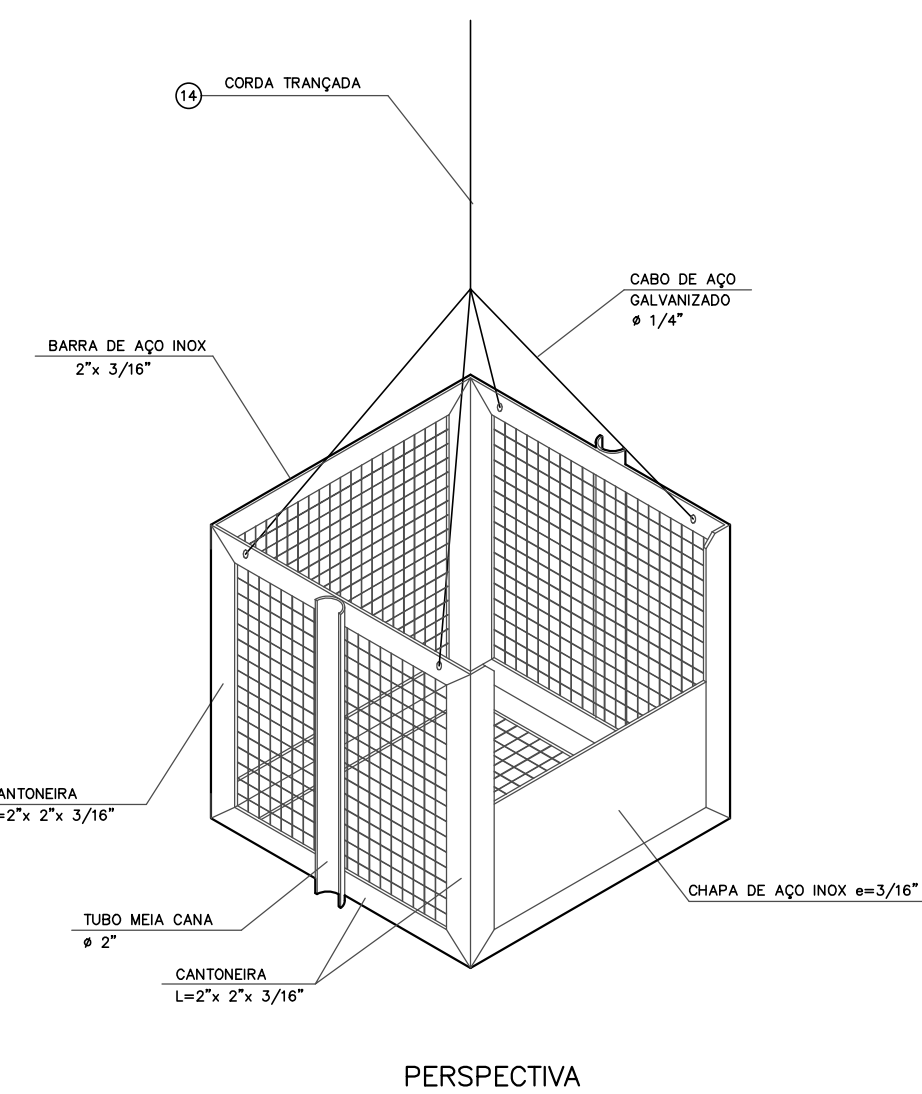
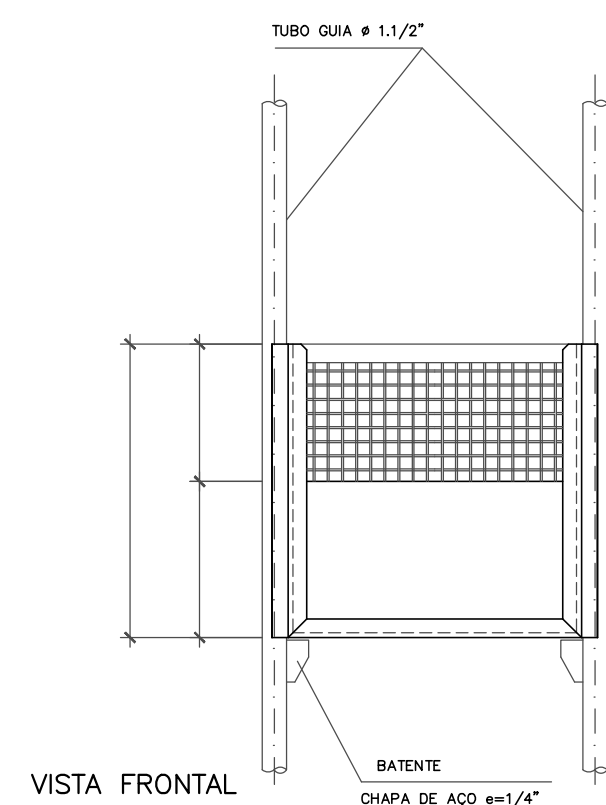
10	2	14	114	15,96
10	3	12	112	13,44
10	4	2	230	4,60
10	5	2	266	5,32

RESUMO			AÇO CASO
Ø(mm)	COMP. (m)	PESO +10%	
10	51,08	33,71Kg	

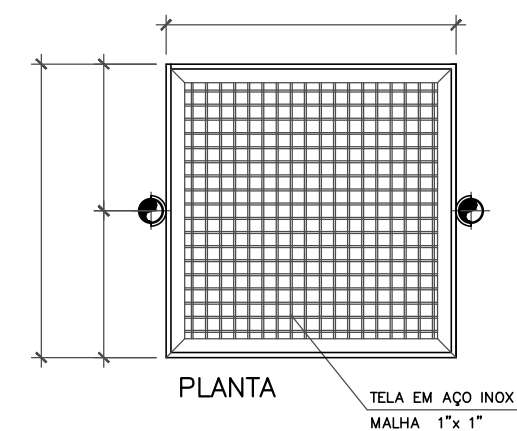
DIÂMETRO	
TUBO	BALÃO
0,15 e 0,30	1,00

ELEVATÓRIA	VAZÃO (L/S)	H MAN (mca)	DIAM. REC.(mm)	EXT. REC.(m)	POT./BOMBA (CV)	OBSERV.
EE-6	66,89	19,33	350	6900	12,5 CV	3 BOMBAS
EE-11	33,65	23,18	200	3240	25 CV	2 BOMBAS

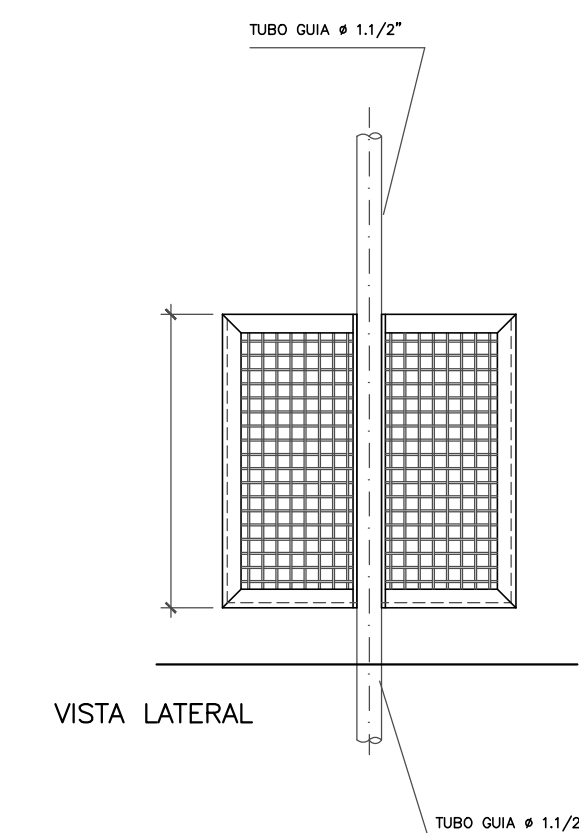
ESCALA 1:15



MALHA 1" x 1"



TUBO GUIA ϕ 1.1/2



ESC. 1:30

